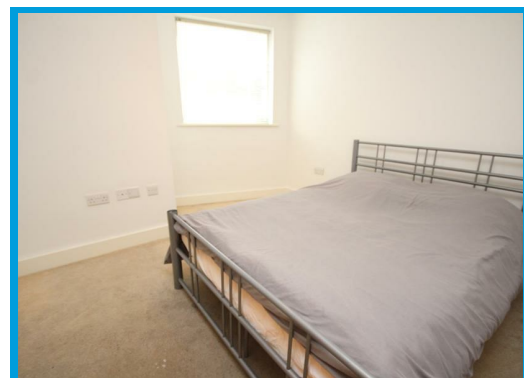
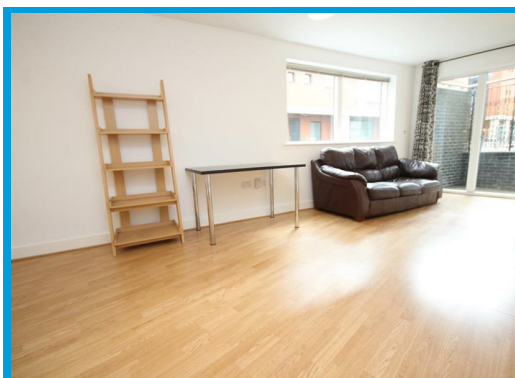




Metro, Walnut Tree Close Guildford, Surrey GU1 4SF

£1,700 PCM

Located in Guildford town centre, this stunning two bedroom apartment offers modern & well presented accommodation within moments of the mainline station.



# Description

Located in Guildford town centre, this stunning two bedroom apartment offers modern & well presented accommodation throughout within moments of the mainline station.

The property is accessed via secure phone entry system and comprises a hallway leading to a light & airy lounge with doors to the balcony, an open plan kitchen with appliances, a double bedroom with built in wardrobes, a further bedroom and a bathroom with shower.

Further features include built in storage cupboards and wood flooring throughout the hall and lounge.



Energy Efficiency Rating		
	Current	Potential
Very energy efficient - lower running costs		
(92 plus) <b>A</b>		
(81-91) <b>B</b>		
(69-80) <b>C</b>		
(55-68) <b>D</b>		
(39-54) <b>E</b>		
(21-38) <b>F</b>		
(1-20) <b>G</b>		
Not energy efficient - higher running costs		
England & Wales	EU Directive 2002/91/EC	

Environmental Impact (CO <sub>2</sub> ) Rating		
	Current	Potential
Very environmentally friendly - lower CO <sub>2</sub> emissions		
(92 plus) <b>A</b>		
(81-91) <b>B</b>		
(69-80) <b>C</b>		
(55-68) <b>D</b>		
(39-54) <b>E</b>		
(21-38) <b>F</b>		
(1-20) <b>G</b>		
Not environmentally friendly - higher CO <sub>2</sub> emissions		
England & Wales	EU Directive 2002/91/EC	